



AquaFlow™

Whole House Salt-Free Descaler

Description

AquaFlow™ Whole House Water Descaler is a water conditioner that reduces the effects of hard water in terms of the scale deposits, or build-ups, that are left on the surfaces the water comes into contact with. It uses a magnetic field to charge the water's mineral particles to stay in the water, instead of being precipitated on surfaces like bathtubs, shower walls or sinks.

HOW IT WORKS

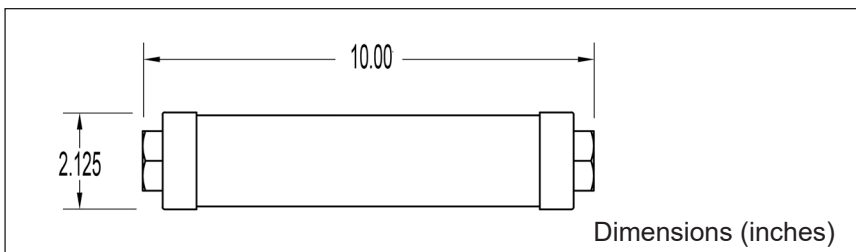
The AquaFlow™ Descaler is a device for galvanic water treatment which can reduce and prevent the formation of lime-scale buildup.

As water flows through the stainless steel chamber, the dynamic design of the descaler provides a small galvanic current which will change the crystalline structure of the minerals dissolved in the water. This effectively means that the now dissolved minerals lose the ability to produce hard scale deposits on surfaces the water touches.

This process does not change the chemical composition of the water but does change the physical properties of the dissolved minerals. For example, calcite (which can easily adhere to surfaces as scale) changes into aragonite which is more soluble in water and does not precipitate out of the water like calcite does.

The Descaler does not change or reduce water hardness, but it does reduce the problems associated with hard water.

The AquaFlow™ does not require any external energy source, nor does it require any maintenance or chemical additives of any type.



Applications

- ▶ Whole House Plumbing
- ▶ Appliances (Dish Washer, Water Heater)
- ▶ Taps, Shower Heads
- ▶ Thermostatic Valves

Benefits

- ▶ Innovative Long-Term Scale Inhibiting
- ▶ Eco-Friendly
- ▶ Healthy and Safe



Installed inline

small footprint, no tank required



Salt-Free Water Treatment

no added salt (sodium-chloride) or other chemicals (potassium chloride), no health concerns, no environmental damage due to high brine content



Nothing is Removed from the Water

vital minerals for human health are maintained



Maintenance-Free 24/7 Operation

no backwashing or resin regeneration needed



Power-Free

no operational costs



Improved Water Quality

no cloudy water, no white spots on dishes, prevents mineral buildup

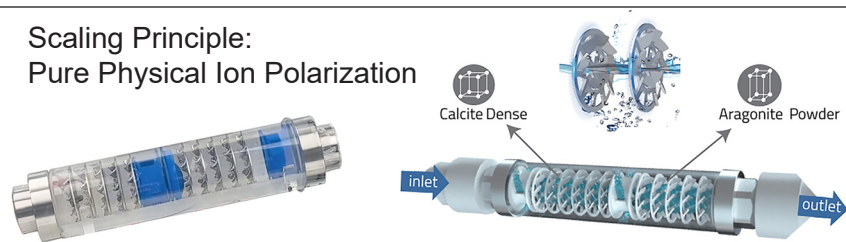
Specifications

Part # 17-AFD-1

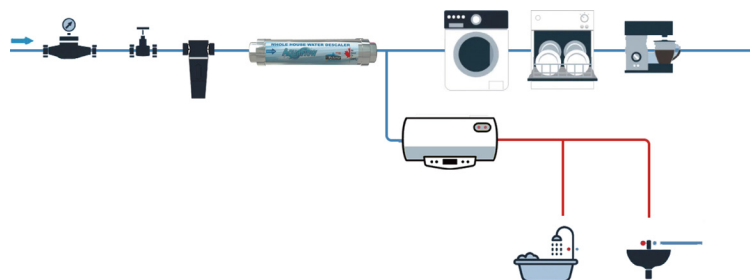
Product Name:	AquaFlow™ Whole House Water Descaler
Product Model:	AFD-1
Scaling Principle:	Pure Physical Ion Polarization
Inlet & Outlet:	DN 20 / 3/4" IN, DN25 / 1" OUT
Chamber Material:	304 Stainless Steel
Installation Method:	Horizontal or Vertical
Water Quality:	Municipal Tap Water
Plumbing Pipe:	CPVC / PVC / PEX / copper / PPR
Application Pressure:	0.15 - 1 MPa / 22 - 145 psi / 1.5 - 10 bar
Temperature Range:	$T_{min.} = 5\text{ }^{\circ}\text{C}$ (41 $^{\circ}\text{F}$), $T_{max.} = 100\text{ }^{\circ}\text{C}$ (356 $^{\circ}\text{F}$)
Rated Flow:	4 m ³ /h / 67 LPM / 17 GPM
Expected min. Lifetime:	10 Years
Product Size:	155 mm X 54 mm / 10" X 2-1/8"
Shipping Weight:	3 lbs / 1.5 kg

Specifications subject to change

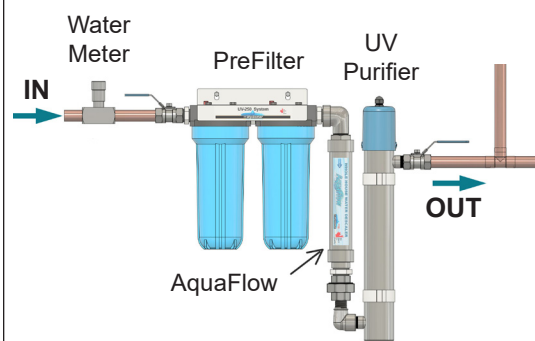
Scaling Principle:
Pure Physical Ion Polarization



Standard Installation on Water Supply System



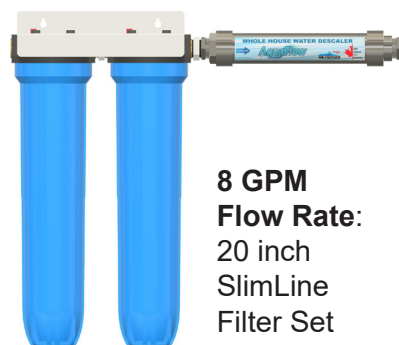
Additional Features



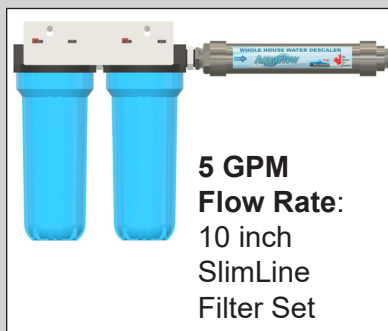
For a complete Whole House Water Treatment it is highly recommended to add a UV Disinfection system after the Descaler for top water quality and peace of mind.

Recommended Configuration

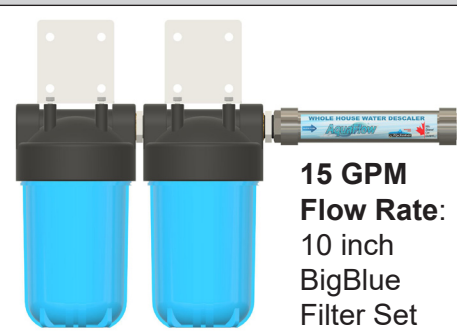
In order to maintain peak performance, the Descaler should be installed with a pre-filter set, according to the flow rate required for the house or application.



**8 GPM
Flow Rate:**
20 inch
SlimLine
Filter Set



**5 GPM
Flow Rate:**
10 inch
SlimLine
Filter Set



**15 GPM
Flow Rate:**
10 inch
BigBlue
Filter Set